

Project Drivers:

- Facility and resource stewardship
- Space stewardship
- Administrative effectiveness and efficiency
- Reinforce academic/institutional branding and recruitment as the “front door”
- Campus crossroads and student life

Guiding Principles:

- Sustainability and well-being
- Integrate existing amenities and future developments
- Community social interaction, academic achievement and retention
- Adaptable, flexible, and efficient spaces

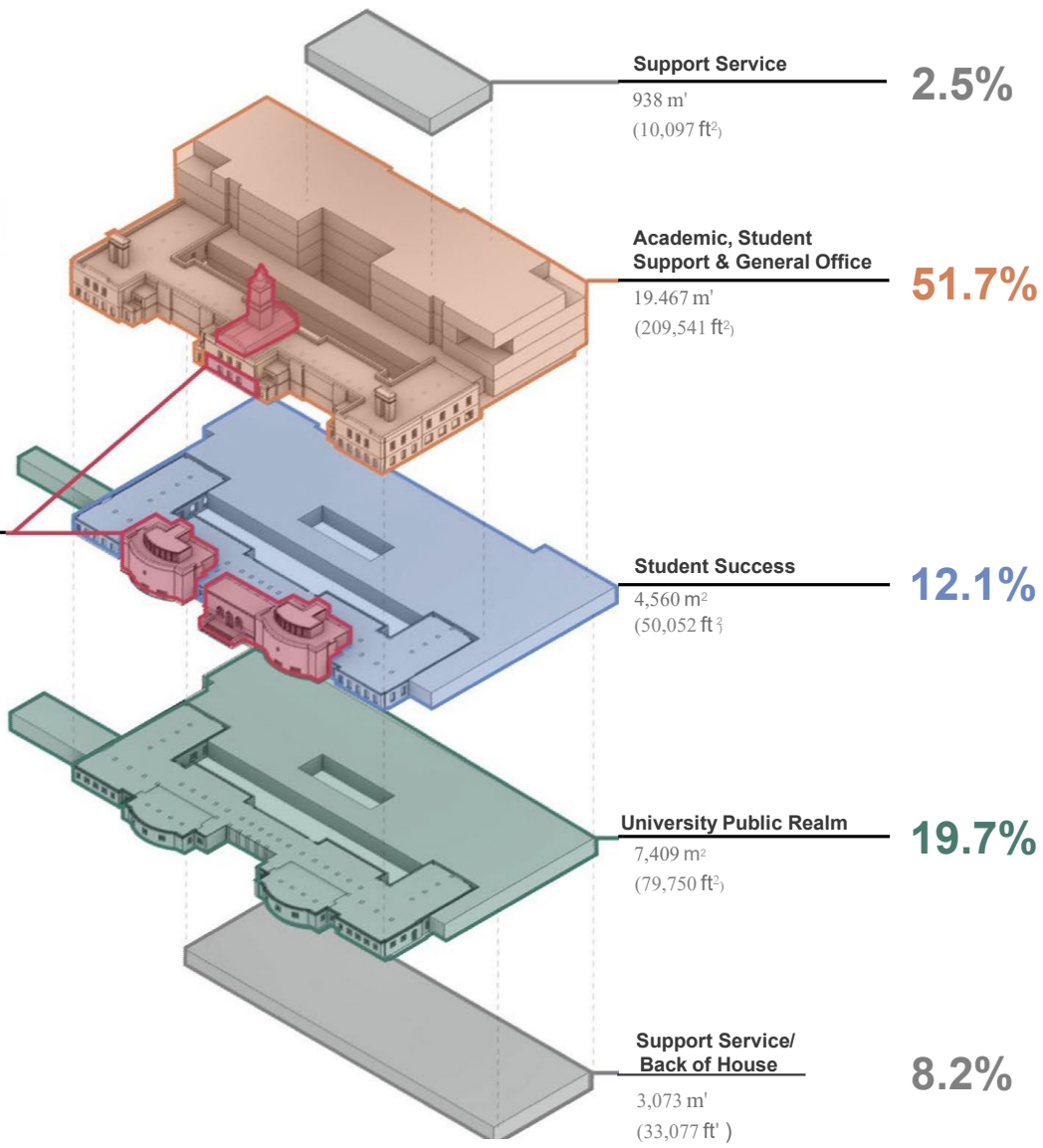
Transformation of Dentistry Pharmacy Building into a Vertical University

- Planning and design with a long-term asset management discipline
- Balancing academic functional program with space stewardship, flexibility, and adaptability
- Bringing many different components and experiences together
- Taking an urban design approach: accessibility, connectivity, proximity, transparency, and natural light
- Institutional history, cultural identity and student life
- Leadership in stewardship in supporting smart growth principles

Gross Area:
37,617 m²

5.8%

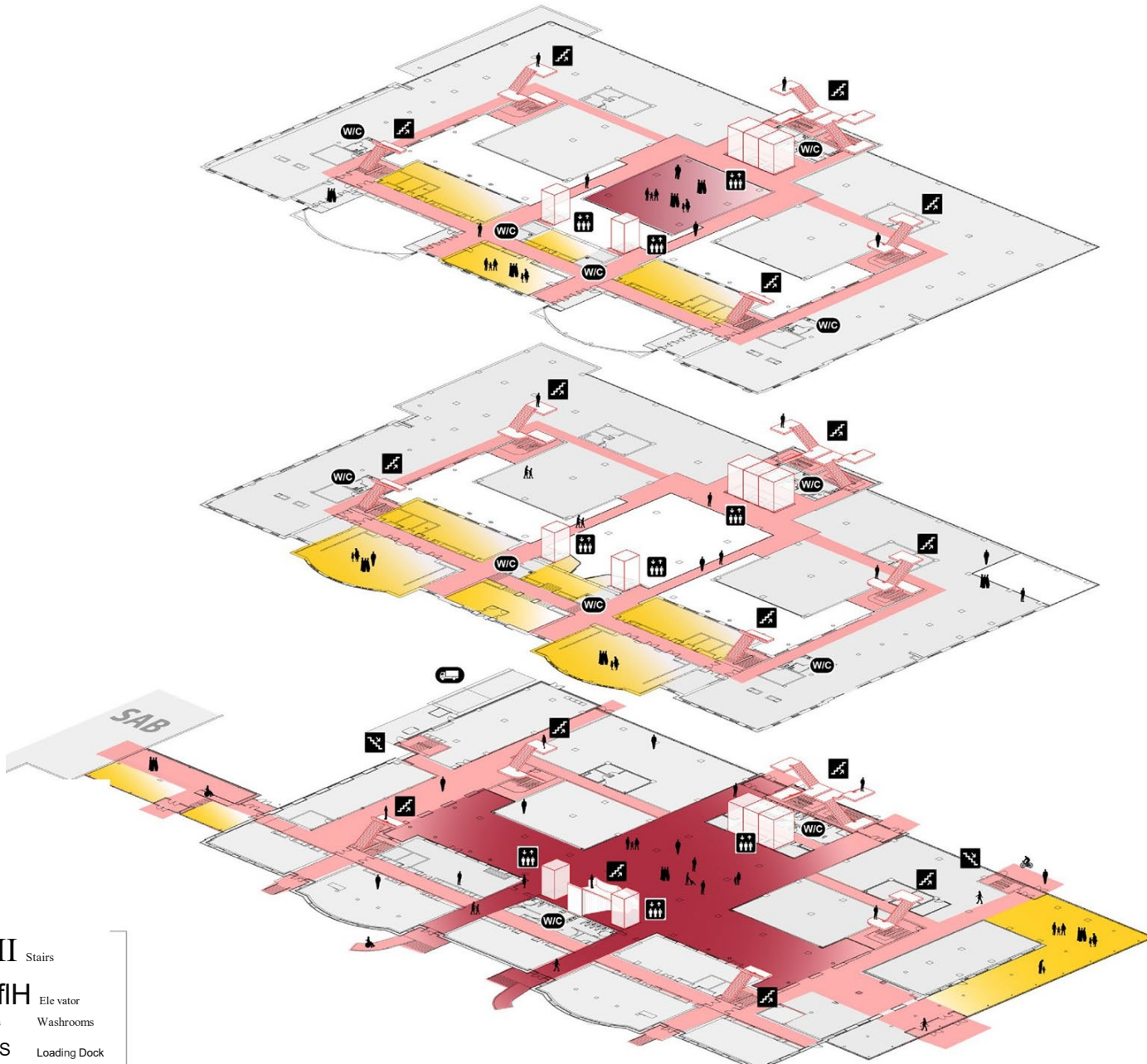
Special Character
2,170 m²
(23,358 ft²)



Conceptual Reference:

The Greek Agora, the Roman Forum and a Campus Centre:

- gathering place or assembly
- public place and place of public discussion
- third place
- connectivity
- convenience
- transparency
- natural light
- supports people flow

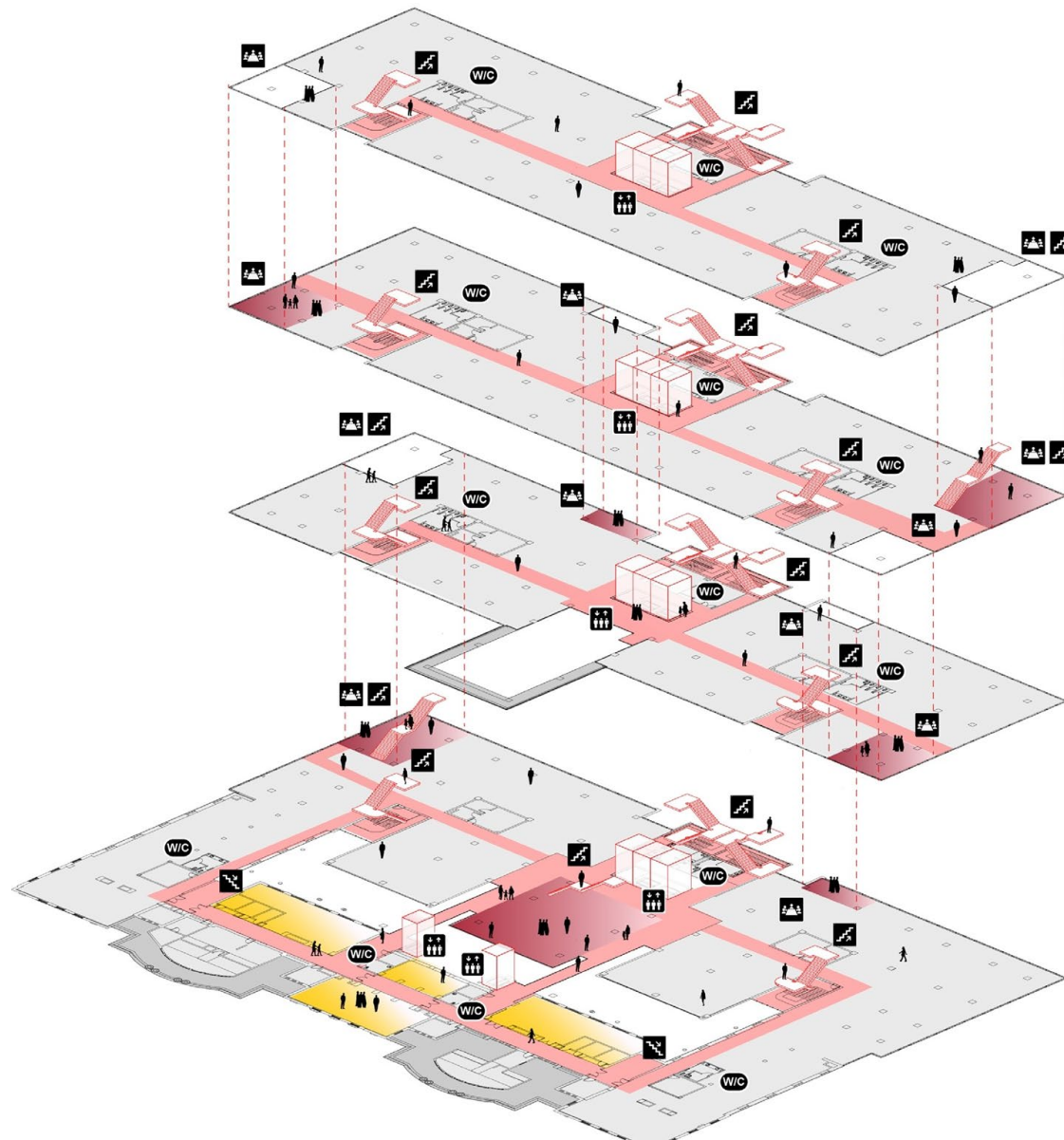


LEVEL
3

LEVEL
2

LEVEL
1

- II Stairs
- flH Elevator
- s Washrooms
- (S Loading Dock
- C)



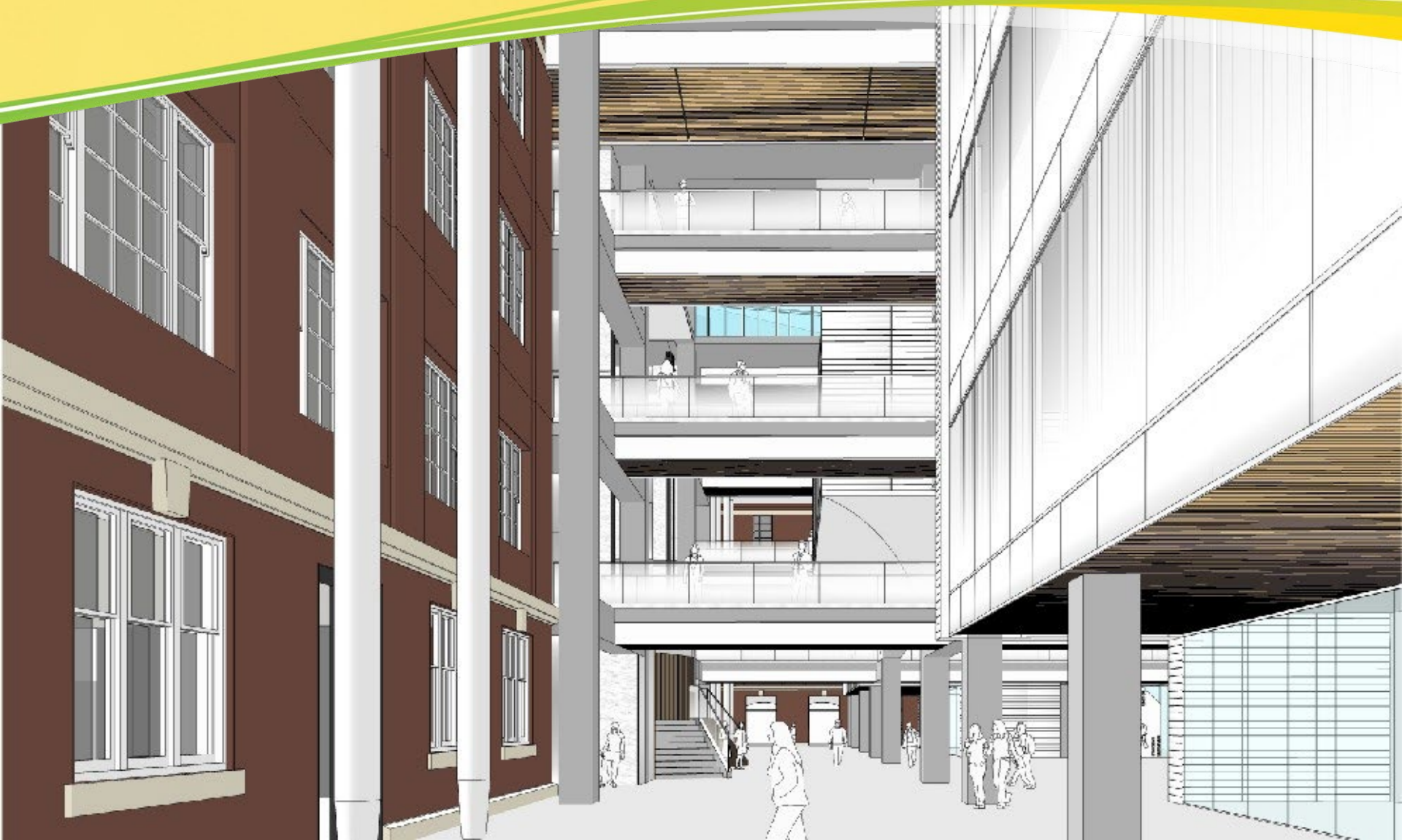
LEVEL
7

LEVEL6

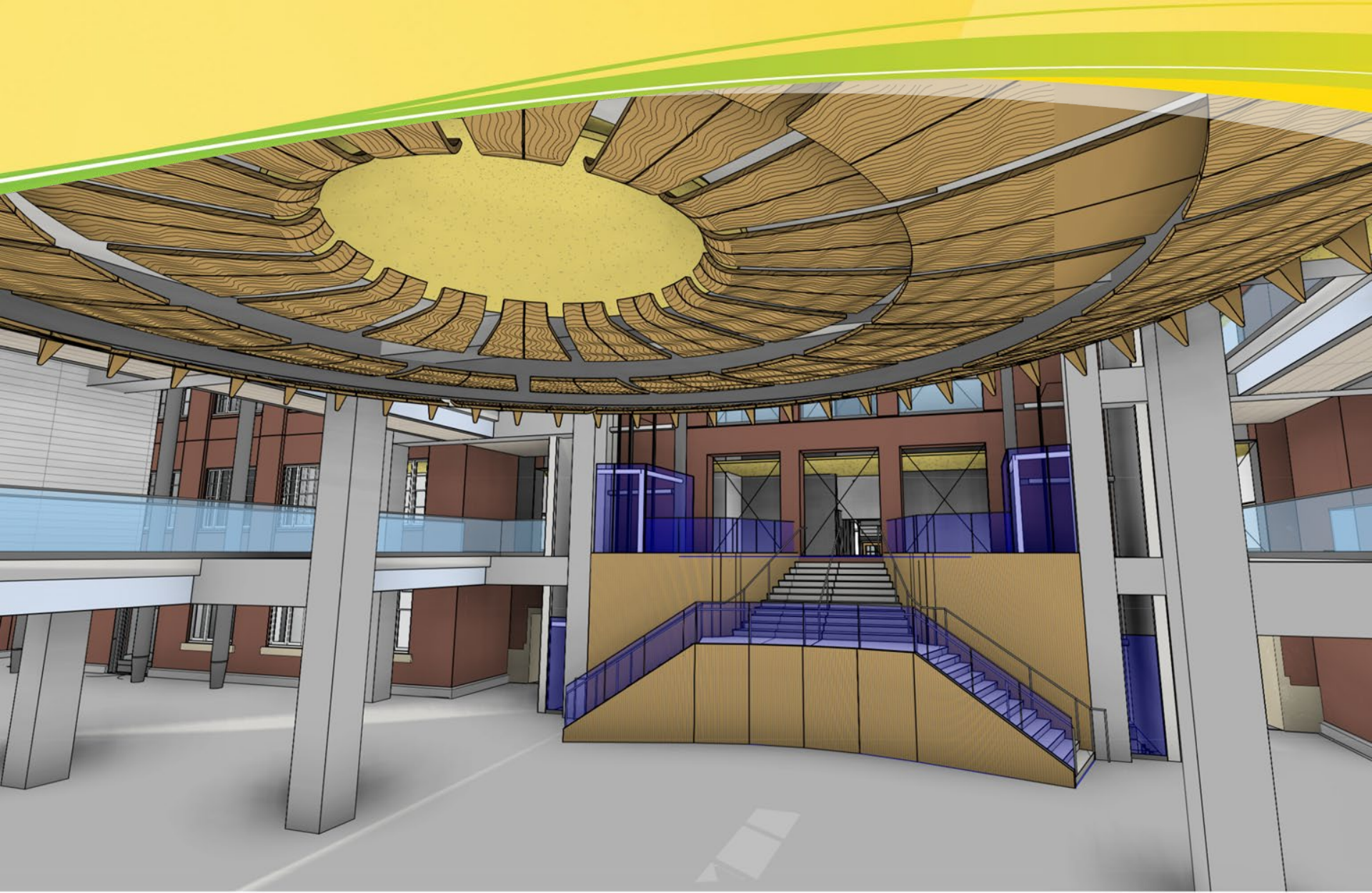
LEVEL
5

LEVEL4

- !! Neighbourhoods
- f Stairs
- e Elevators
- W/C Washrooms
- Truck Loading Dock







- Executive Oversight Committee
- Project Steering Committee
- Departmental & Unit Programming Working Groups



Student Involvement:

- SU and GSA representation on Project Steering Committee
- SU engaged with 600+ students on naming categories input
- More than 10 student groups consulted from Comp Sci and Math
- As more groups are consulted, more student input will be sought

Student Input Results:

- Spaces for student clubs to meet
- Space for Ada's Team (EDI-focused student group)
- Lots of Hangout and Working Spaces for students
- Help Centre and Tutorial Space

Process: Waterfalls and Pools

- Schedule as a series of individual and collective works.
- Non-linear but dependent on each other



Programming Approaches & Principles: Priorities Matrix

Equity, Diversity and Inclusion: Strategic Plan Themes	Facility and Resource Stewardship	Space Stewardship	Administrative Effectiveness and Efficiency	Branding and Recruitment as the "front door"	Campus Crossroads and Student Life	Sustainability and Wellbeing	Integrating existing amenities and future development	Social Interaction, Academic Achievement and retention	Inclusive Design Principles	Adaptable, flexible and efficient space	University Hub, Sense of Energy	Re-imagine and Re-invent, Explore new ideas	Flexibility, Sharing and Adaptability	Score out of 65	%
	Vision and Leadership	Low	Low	High	Medium	High	High	Low	High	High	Low	Medium	High	Medium	43
Research Teaching + Public	Low	Medium	Low	Medium	Medium	Medium	Low	Medium	Medium	Low	Medium	High	Medium	33	50.8
Workforce	Low	Medium	Medium	Medium	High	High	Low	High	High	Low	Medium	High	Medium	39	60.0
Students, Trainees and Student Climate	Low	Low	Low	High	Medium	High	Low	High	High	Low	Medium	High	Medium	39	60.0
	Low	Low	Low	High	High	High	Medium	High	High	Medium	Medium	High	Medium	45	69.2
IAMS: Principles	Facility and Resource Stewardship	Space Stewardship	Administrative Effectiveness and Efficiency	Branding and Recruitment as the "front door"	Campus Crossroads and Student Life	Sustainability and Wellbeing	Integrating existing amenities and future development	Social Interaction, Academic Achievement and retention	Inclusive Design Principles	Adaptable, flexible and efficient space	University Hub, Sense of Energy	Re-imagine and Re-invent, Explore new ideas	Flexibility, Sharing and Adaptability	Score out of 65	%
Student Success, Life Experience, Research and Scholarship	Low	Low	Medium	Medium	High	High	Low	High	Medium	Low	High	Medium	Medium	39	60.0
Asset Management	High	High	Medium	Low	High	High	High	Low	High	Medium	Medium	Medium	Medium	47	72.3
Campus Character	Medium	High	Low	High	High	Low	High	Medium	Low	Low	High	Medium	Medium	41	63.1
Decision Making	Medium	Medium	Low	Low	Low	Low	Medium	Low	Low	Low	Low	Low	Low	19	29.2
Faculty of Science	Dent Pharm Core and Shell										Fit Out			Evaluation Criteria	
Strategic Plan 2015-2020	Building Drivers					Guiding Principles					Programming Principles			Score out of 65	%
	Facility and Resource Stewardship	Space Stewardship	Administrative Effectiveness and Efficiency	Branding and Recruitment as the "front door"	Campus Crossroads and Student Life	Sustainability and Wellbeing	Integrating existing amenities and future development	Social Interaction, Academic Achievement and retention	Inclusive Design Principles	Adaptable, flexible and efficient space	University Hub, Sense of Energy	Re-imagine and Re-invent, Explore new ideas	Flexibility, Sharing and Adaptability		
EDI	Medium	Low	High	High	High	High	High	High	High	Medium	High	High	High	53	81.5
Visibility of Math and Comp Sci	Low	Low	Low	High	High	Medium	Low	High	Low	Low	High	High	High	39	60.0
Themes from User Groups															
Collaboration Space within Math and with other departments	High	High	Low	Low	High	Medium	Low	High	High	High	High	High	High	51	78.5
High Quality Heads Down Space	Low	Low	Medium	Medium	Medium	Medium	Low	High	High	Low	Low	Medium	Medium	33	50.8
Supporting students and learning	Medium	Medium	High	High	High	High	Low	High	High	High	High	High	High	57	87.7
Showing the Work of Science	Medium	Low	Low	High	Medium	High	Low	High	High	Low	High	High	Medium	43	66.2
Programming Themes															
Modular Labs	High	High	Medium	High	Medium	High	High	High	High	High	High	High	High	61	93.8
Graduate Student Space	High	High	Medium	High	High	Medium	High	High	High	High	High	High	High	61	93.8
Administration and Student Groups	Dent Pharm Core and Shell										Fit Out			Evaluation Criteria	
Executive	Building Drivers					Guiding Principles					Programming Principles			Score out of 65	%
	Facility and Resource Stewardship	Space Stewardship	Administrative Effectiveness and Efficiency	Branding and Recruitment as the "front door"	Campus Crossroads and Student Life	Sustainability and Wellbeing	Integrating existing amenities and future development	Social Interaction, Academic Achievement and retention	Inclusive Design Principles	Adaptable, flexible and efficient space	University Hub, Sense of Energy	Re-imagine and Re-invent, Explore new ideas	Flexibility, Sharing and Adaptability		
Consolidated Executive Suite	High	High	High	High	Low	Medium	Low	High	Low	High	High	High	High	51	78.5
Collaboration Space for VPs	High	High	High	Low	Low	High	Low	High	Low	High	High	High	High	49	75.4
General Counsel and Governance	High	High	High	High	Low	High	Medium	High	Low	High	High	High	High	55	84.6
Shared Meeting Spaces	High	High	High	Medium	Low	High	High	High	High	High	High	High	High	59	90.8
Supporting staff and groups in other space	Medium	Medium	Medium	Low	Low	Medium	High	Medium	Medium	Medium	Low	High	Low	35	53.8
Registrar Back of House															
Related to Student Service Centre	Medium	Low	High	Low	Medium	Low	Low	Medium	Low	Low	Medium	Medium	Medium	29	44.6
Other Registrar Tasks	Low	Low	Medium	Low	Low	Low	Low	Low	Low	Low	Low	Low	Medium	17	26.2
Student Support:															
Supporting all Students	Medium	Medium	High	High	High	High	Low	High	High	High	High	High	High	57	87.7
Pop Up Student Support	High	High	High	High	High	High	High	High	High	High	High	High	High	65	100.0
Food Services	Low	Low	Low	High	High	High	Medium	High	Medium	Medium	High	Low	Low	39	60.0
Parking Services and One Card	High	High	High	High	High	High	High	High	High	High	High	High	High	61	93.8

Programming Approaches & Principles: SET Detail

University of Tomorrow: Service Excellence Transformation Student Service Centre	Dent Pharm Core and Shell										Fit Out			Evaluation Criteria	
	Building Drivers					Guiding Principles					Programming Principles			Score out of 65	%
	Facility and Resource Stewardship	Space Stewardship	Administrative Effectiveness and Efficiency	Branding and Recruitment as the "front door"	Campus Crossroads and Student Life	Sustainability and Wellbeing	Integrating existing amenities and future development	Community, Social Interaction, Academic Achievement and retention	Inclusive Design Principles	Adaptable, flexible and efficient space	University Hub, Sense of Energy	Re-imagine, Explore new ideas	Flexibility, Sharing and Adaptability		
Staff Service Centre	High	High	High	High	High	High	Low	High	High	Low	High	High	High	57	87.7
Centres for Excellence	High	High	High	Low	Low	High	Low	Low	High	Low	Low	High	Medium	39	60.0
Service Partners	High	Medium	High	Low	Low	High	Low	Medium	Medium	Low	Low	High	Low	35	53.8
Universal Transaction Processing Hub	Medium	Medium	High	High	Low	High	Medium	High	High	Medium	Low	High	Medium	47	72.3
Service Culture	High	High	High	Low	Low	High	Low	Medium	Low	Low	Low	High	Low	35	53.8
	Medium	Medium	High	High	High	High	Low	High	High	Medium	High	High	High	55	84.6

Programming Approaches & Principles: SET Detail

University of Tomorrow: Service Excellence Transformation Student Service Centre	Dent Pharm Core and Shell				
	Building Drivers				
	Facility and Resource Stewardship	Space Stewardship	Administrative Effectiveness and Efficiency	Branding and Recruitment as the "front door"	Campus Crossroads and Student Life
	High	High	High	High	High
Staff Service Centre	High	High	High	Low	Low
Centres for Excellence	High	Medium	High	Low	Low
Service Partners	Medium	Medium	High	High	Low
Universal Transaction Processing Hub	High	High	High	Low	Low
Service Culture	Medium	Medium	High	High	High

Programming Approaches & Principles: SET Detail

University of Tomorrow: Service Excellence Transformation Student Service Centre	Dent Pharm Core and Shell					Fit Out		
	Guiding Principles					Programming Principles		
	Sustainability and Wellbeing	Integrating existing amenities and future development	Community, Social Interaction, Academic Achievement and retention	Inclusive Design Principles	Adaptable, flexible and efficient space	University Hub, Sense of Energy	Re-imagine and Re-invent, Explore new ideas	Flexibility, Sharing and Adaptability
	High	Low	High	High	Low	High	High	High
Staff Service Centre	High	Low	Low	High	Low	Low	High	Medium
Centres for Excellence	High	Low	Medium	Medium	Low	Low	High	Low
Service Partners	High	Medium	High	High	Medium	Low	High	Medium
Universal Transaction Processing Hub	High	Low	Medium	Low	Low	Low	High	Low
Service Culture	High	Low	High	High	Medium	High	High	High

Programming Approaches & Principles: Student Service Centre and Service Culture

University of Tomorrow: Service Excellence Transformation Student Service Centre	Fit Out			Evaluation Criteria	
	Programming Principles			Score out of 65	%
	University Hub, Sense of Energy	Re-imagine and Re-invent, Explore new ideas	Flexibility, Sharing and Adaptability		
Student Service Centre	High	High	High	57	87.7
Staff Service Centre	Low	High	Medium	39	60.0
Centres for Excellence	Low	High	Low	35	53.8
Service Partners	Low	High	Medium	47	72.3
Universal Transaction Processing Hub	Low	High	Low	35	53.8
Service Culture	High	High	High	55	84.6

Programming Approaches & Principles:

Planning Principles

University Hub

- Campus crossroads, consolidation
- A sense of energy

Re-imagine and Re-invent

- Opportunity to explore new ideas
- Change of culture
- Equity, Diversity and Inclusion

Flexibility

- Multi-functional building
- Sharing space, adaptability

Building Principles and Connection to Departments

University Hub

- Clusters of spaces throughout the building
- Energy of teaching and research labs

Re-imagine and Re-invent

- Support for Math and Science Students
- Graduate Students
- EDI

Flexibility

- Research Labs
- Meeting and Gathering Space
- Office Space

Next Steps



Recommendation through Planning and Programming

- Functional Programming
- Stacking
- Option Development
- Evaluations

Connecting to Vision

- Building
- Occupant needs
- Occupant actions to support goals

What Does Success for Programming & Fit-Out Look Like?

- A historic building with a new purpose
- New community
- New vibe

A Newborn.



Thank you for your time and consideration.

QUESTIONS?

Adaptive Reuse Conservation Approach:



- The repair and conservation of the entry foyer and reading room.
- Conservation of the masonry work
- Replacement of all windows to original fenestration design.
- The rehabilitation of character-supporting spaces, including the former lecture halls and connecting east-west corridors on first and second levels.
- The contemporary fit-out of other office spaces in 1922 wing.

Building Program, Transformation into a Vertical University & Flexibility

General Space Type Categories

University Public Realm



University public realm spaces are frequented by all members of the campus community; students, faculty and staff. They are open and interactive spaces. These spaces provide amenities that are focused on academic mission and campus life programming. They are welcoming, inclusive and can range from quiet to active uses, as well as special functions.

Student Success



These spaces directly support student success and achievement. They are destinations within the campus. Potential programming including information, administrative functions, registrar, etc

General Office



Currently the office space includes both executive and general purpose office space. They are efficient, functional and adaptable.

Special Character



These area spaces currently identified by the design team as character defining within the 1922 building. They represent the legacy of the institution and would likely have public facing functions.

Support Service



These spaces include back of house support functions including washrooms, mechanical and electrical services, storage, maintenance, and loading functions.